

May'2019



SMART HOME AND SMART OFFICE

EltexAlatau LLP.
Manufacturer of telecommunication equipment

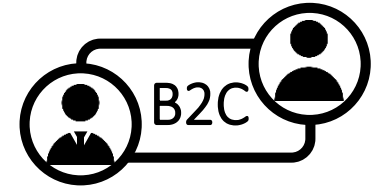


Objective

INCREASE IN CARRIER OPERATOR'S PROFIT

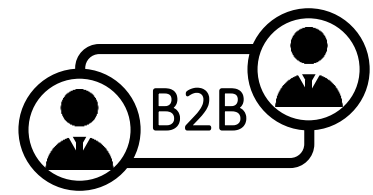


Service



for subscribers:

“Smart Home”, “Smart Flat”

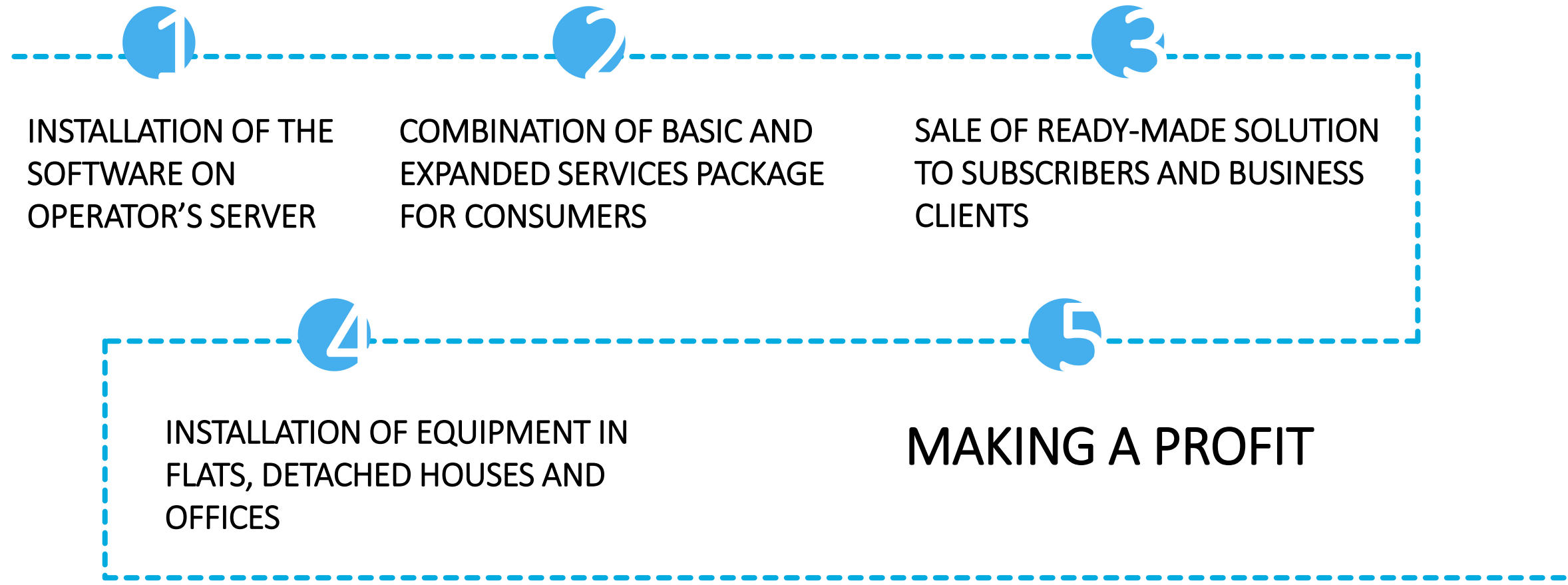


for business customers:

“Smart Office”, “Smart Building”



IMPLEMENTATION SYSTEM





CONTENTS

BASIC SOLUTION:

ELTEX SC platform Mobile application		
RG-35-WZ	NTU-RG-1421G-WZ	
WEP-2ac-Z		
SZ-PIR Motion sensor	SZ-MCT Door/window sensor	SZ-WLK Water leak sensor

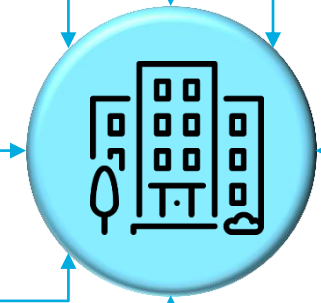
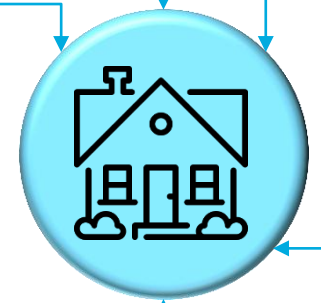
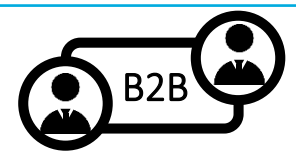
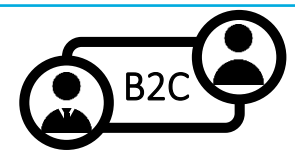
ADVANCED SOLUTION:

Philio PAN06 Smart relay	Philio PSG01-5 Smoke sensor	Philio PAN16 Smart socket	Zipato RGBW Bulb Smart switch	Video monitoring *under development
SZ-CP04C Energy consumption recorder	SZ-W02 Water consumption recorder	MD1-CV-RS485A Converter		

Integration with a receiver of PSF

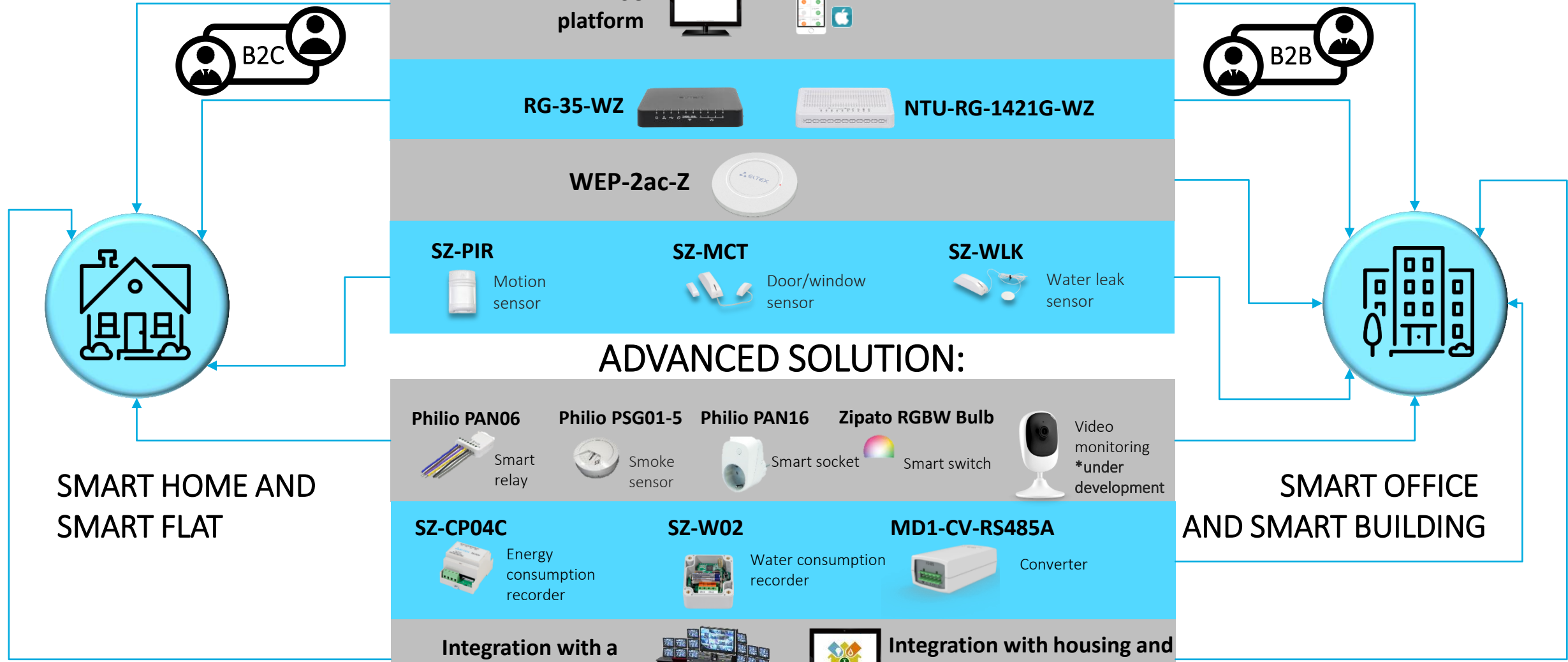


Integration with housing and public utilities platform



SMART HOME AND SMART FLAT

SMART OFFICE AND SMART BUILDING



EQUIPMENT

ELTEX SC



Software-hardware system for automatic control over home systems and devices. The system uses "Eltex-SC" controller integrated in subscriber devices. It allows to create a wireless sensor network controlled by a user through a smartphone, tablet PC or Web browser.

CONTROLLERS

RG-35-WZ



- Realtek processor
- 4 ports of LAN FE
- 1 port of WAN GE
- Dual Band Wi-Fi 802.11a/b/g/n/ac 2x2

PON NTU-RG-1421G-WZ



- 1xFXS
- 4x1G LAN
- 2xUSB2.0xUSB
- 1xGEPON WAN
- Wi-Fi IEEE 802.11n, 2x2, 2.4 GHz
- Wi-Fi IEEE 802.11ac, 3x3, 5 GHz

WEP-2ac-Z*



- Wi-Fi IEEE 802.11a/b/g/n/ac
- 1 Ethernet port of 10/100/1000 Base-T (RJ-45)
- Console (RJ-45)

*under development

SENSORS

SZ-MCT



- Magnetic contact door/window sensor
- Operation frequency of 869 MHz
- Remote OTA update

SZ-PIR



- Wireless motion sensor
- Operation frequency of 869 MHz
- Remote OTA update

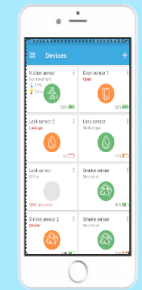
SZ-WLK



- Wireless leak sensor
- Operation frequency of 869 MHz
- Remote OTA update



MOBILE APPLICATION

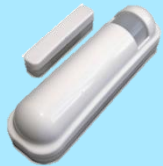


- Mobile applications for main platforms (**Android, iOS**)
- Receiving information about home condition through PUSH notifications
- User-friendly interface
- Ability to check the system status whenever it is convenient
- Ability to develop customized applications

EXAMPLES OF COMPATIBLE EQUIPMENT

SENSORS

Philio PST02-5B



Motion, temperature, light sensor

Philio PAT02-5A/ PAT02-1A



Leak, humidity, temperature sensor

Philio PSG01-5



Smoke sensor

SW-SD



Smoke sensor

H-MS



Motion sensor



EXECUTIVE DEVICES

Philio PAN06



Smart relay

Philio PAN16



Smart socket

Zipato RGBW Bulb



Smart switch

Hank RGB Bulb



Smart switch

May'2019



| AUTOMATIC METER READING

EltexAlatau LLP.
Manufacturer of telecommunication equipment

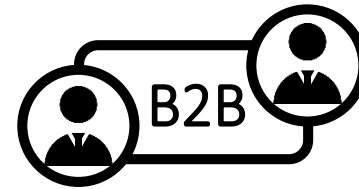


Objective

INCREASE IN CARRIER OPERATOR'S PROFIT



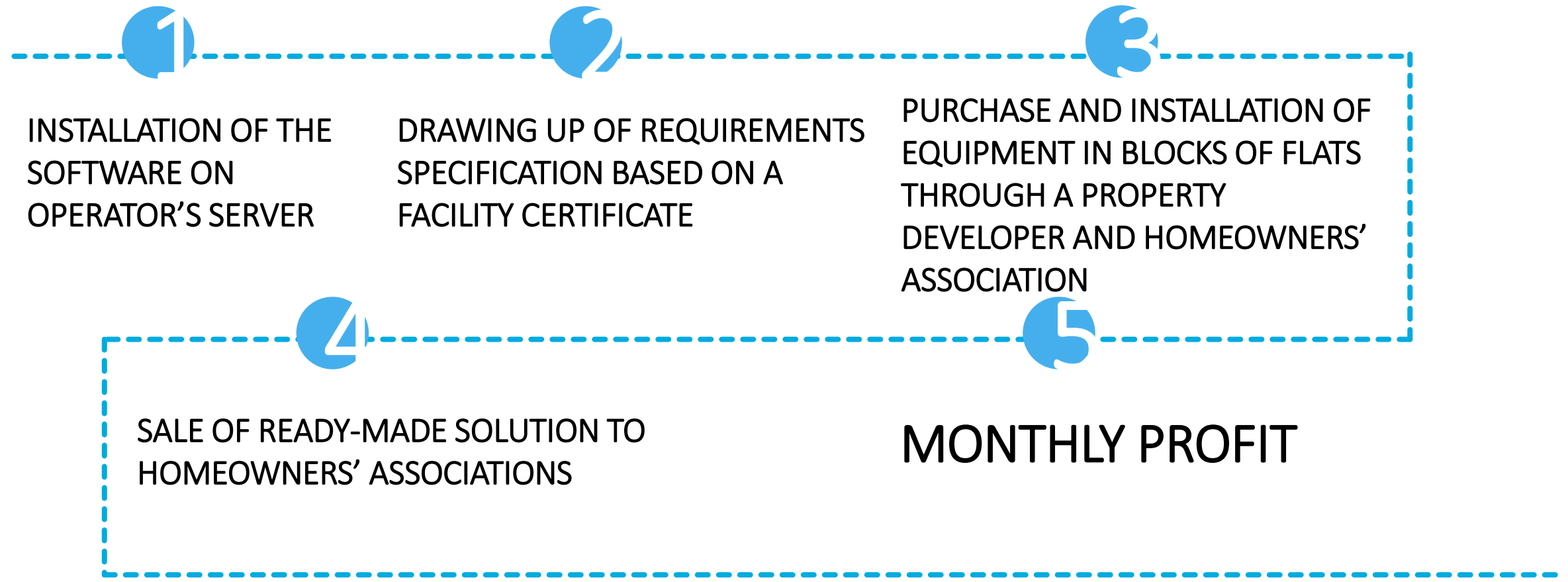
Service



for homeowners' associations:
automatic data collection from individual and communal metering devices

for subscribers:
automatic data collection from individual metering devices

IMPLEMENTATION SYSTEM



AUTOMATIC METER READING



Integrated solution for metering data from various utility lines



Data inspection in real time operation



Metering data from already existing meters



Automatic control of devices and data-collecting system



Wireless infrastructure building



Protection of information



Minimal expenses for installation and maintenance

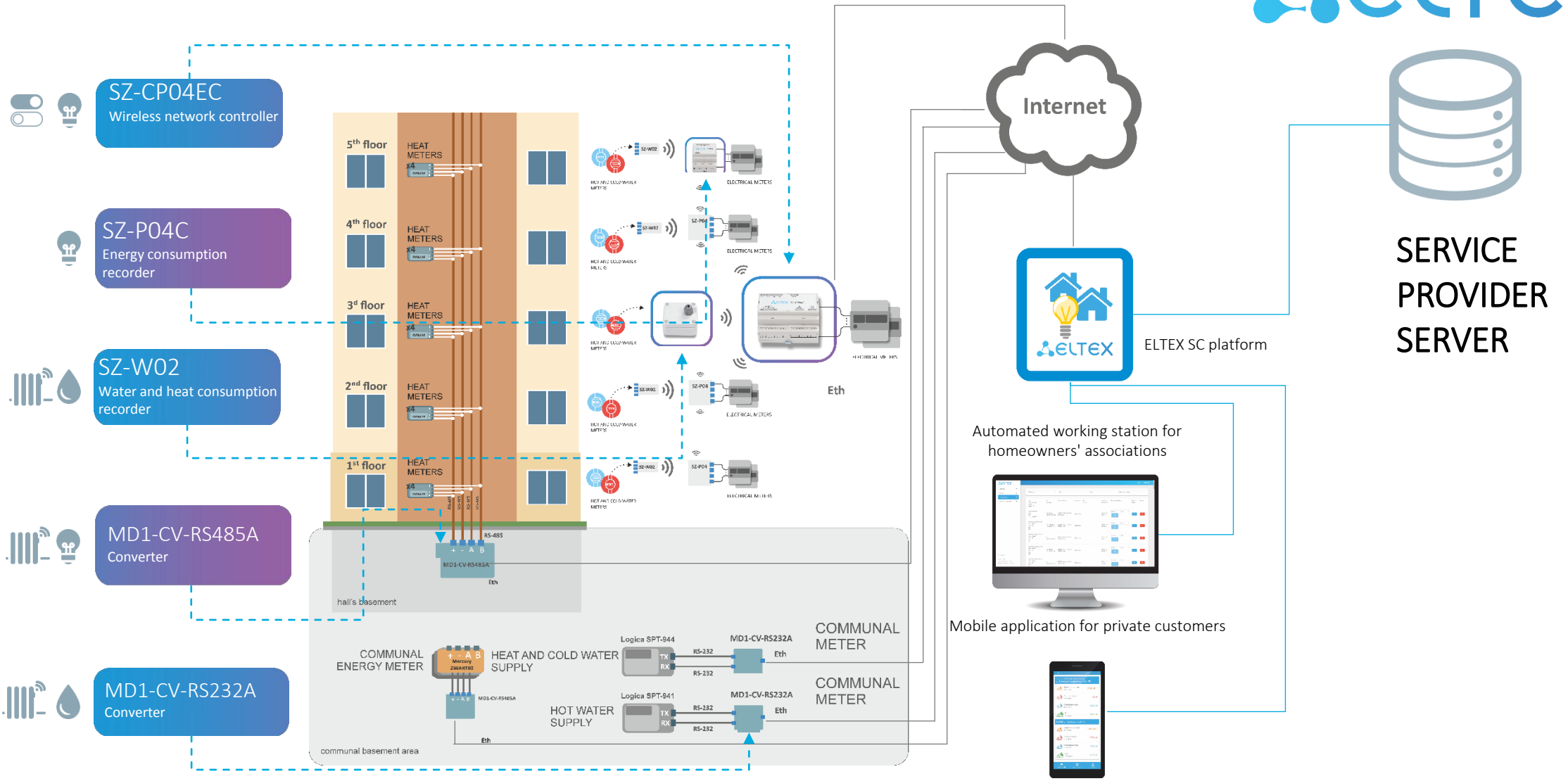


THE SOLUTION INCLUDES:

- Recorders
- Converters
- **ELTEX Smart Control**
- Automatic working place
- Mobile application



GENERAL SOLUTION PATTERN





ELTEX EQUIPMENT

Wireless network controller with the inbuilt energy consumption recorder



- 1 GHz Realtek processor
- Operation frequency 869 MHz
- 4 pulse outputs
- Ethernet 10/100 Base-T

Energy consumption recorder



- Operation frequency 869 MHz
- 4 pulse outputs
- Three-phase supply redundancy

Water and heat consumption recorder



- Operation frequency 869 MHz
- 2 pulse outputs
- battery: CR123A

Water and heat consumption recorder



- Operation frequency 869 MHz
- 8 pulse outputs
- battery: CR123A

*under development

Energy and heat converter



- Compact case
- Simplified installation
- Low price
- +12V and +5V outputs

Water and heat converter





EXAMPLES OF COMPATIBLE EQUIPMENT

Pulse output



Energy meters:

- Mercury 205.1 (3200 imp/kWh)
- Energomera CE101 R5 (1000 imp/kWh)

Water meters:

- Valtec VLF-U (100 imp/m3)
- VSHd-15 (1000 imp/m3)

•PULSE 15 UI-80

- Decast VSKM DG (100 imp/m3)

Heat meters:

- Pulsar
- PULSE STU-15I

RS485 interface



Energy meters:

- Mercury 230 AR-0X R
- Mercury 230 ART-0X R

Heat meters:

- Pulsar (individual measuring device)

RS232 interface



Heat/water meters:

- Logica SPT941.20
- Logica SPT942
- Logica SPT943
- Logica SPT944

Heat meter-recorder:

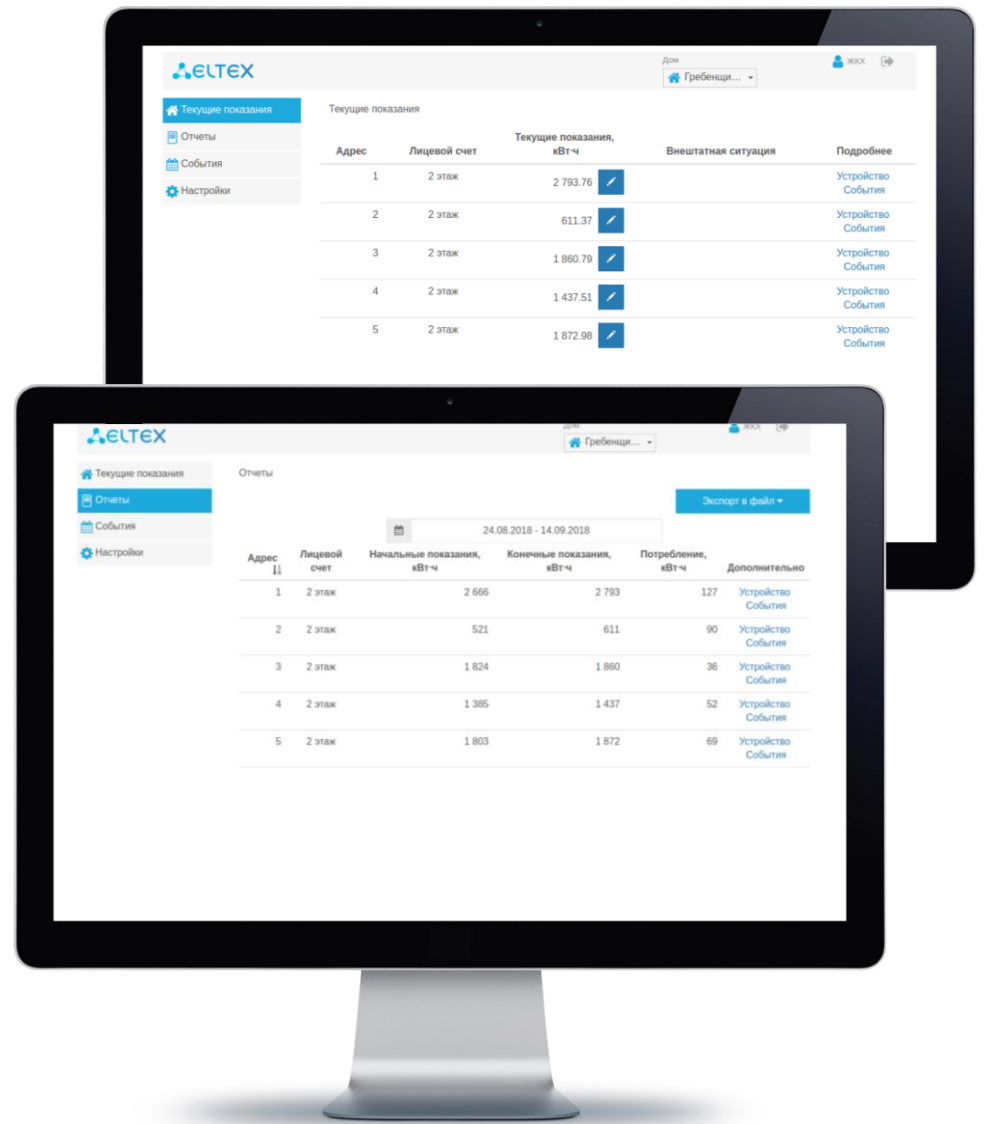
- TSRV-034
- TSRV-026m



AUTOMATED WORKING STATION

For homeowners' associations and resource providers

- 1 Supervisory monitoring of operation parameters and executive equipment status
- 2 Efficiency upgrading of mutual settlements between suppliers and consumers of resources
- 3 Built-in algorithms for determination of differences in registered/actual resource consumption readings provide reliable reading
- 4 Utilities consumption accounting (door-to-door, house-to-house)
- 5 Two accounting systems in a single interface
- 6 Emergencies monitoring with automatic notifying system
- 7 Data inspection in real time operation and reports creation





MOBILE APPLICATION For Private Customers



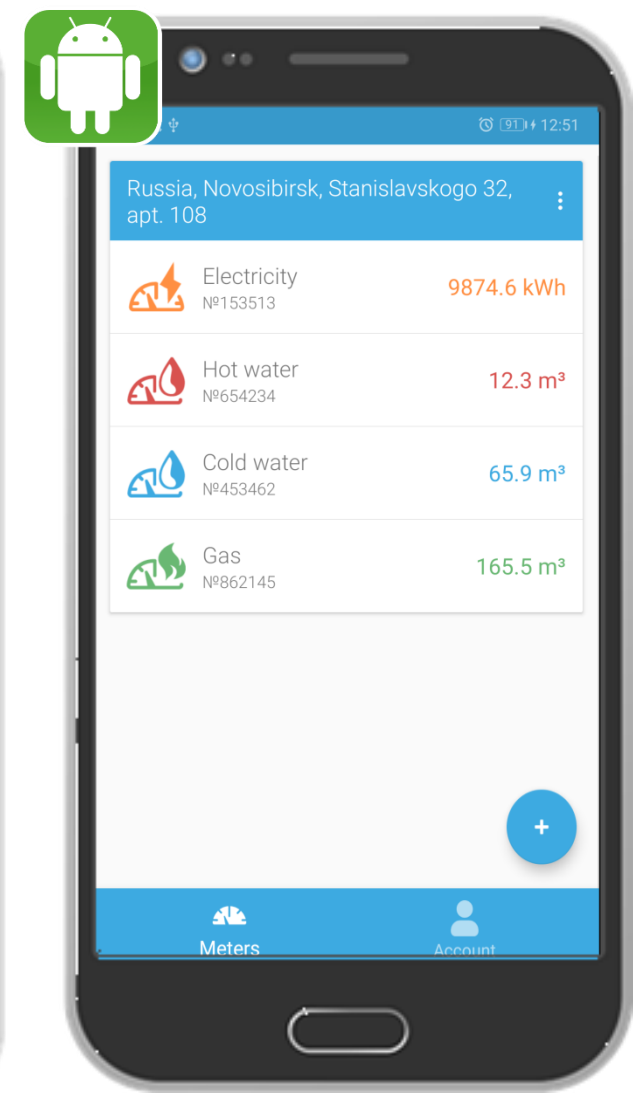
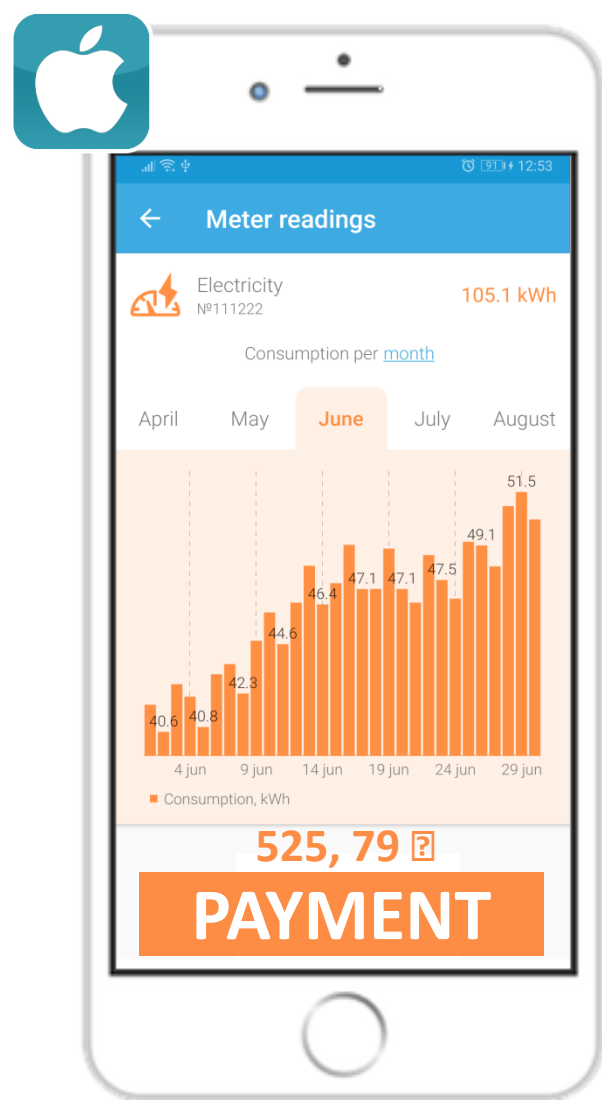
Interface customization



Providing data on utilities actually used



Instant payment of bills



THANK YOU FOR YOUR ATTENTION!



We are open and ready to discuss business, to develop and augment the solutions according to your technical project.

EltexAlatau LLP.

Manufacturing of telecommunication equipment

050032, 9 Ibragimov street, Alatau district, Almaty, Kazakhstan, 050032

Opening times: 9am to 6pm (GMT+6),

Monday to Friday

Phone: +(727) 220-76-10, +7 700 320-18-38

POST@ELTEXALATAU.KZ ; WWW.ELTEXALATAU.KZ

LEARN MORE ABOUT ELTEX
PRODUCTS AND SOLUTIONS

